



# The Postharvest Education Foundation Newsletter

---

## Founder's message



**[Dr. Lisa Kitinoja](#)**  
**Founder**

### ***What Happens After “Mission Accomplished” for a 15-Year-Old Non-Profit Organization?***

The Postharvest Education Foundation was established to train a new generation of professionals and equip them with the knowledge, resources, guidance, and tools needed to reduce postharvest losses within their communities.

PEF delivered postharvest training through workshops, short courses, e-learning programmes, books, manuals, collaborative research, extension programmes, and field activities across Africa and South Asia.

During the COVID-19 pandemic, PEF provided small grants to support local postharvest training programs for farmers, traders, processors, and marketers. The Foundation later expanded its efforts to include fundraising in support of organizations involved in food rescue and distribution in the United States.

Over the years, more than a dozen board members contributed their time, expertise, commitment, and financial support to advance PEF's mission. Although the Board of Directors considered adopting a new focus, the retirement of the founder and several long-serving board members made it increasingly difficult to recruit new members with the time and financial capacity needed to sustain the organization's activities.

For PEF, success means having achieved its mission. The Foundation has trained more than 150 postharvest specialists and trainers who are now active across 30 countries. Having fulfilled its objectives, PEF has chosen to conclude its operations while ensuring that its training materials, resources, and expertise remain available to the many individuals, businesses, non-profit organizations, and researchers working to reduce food losses worldwide.

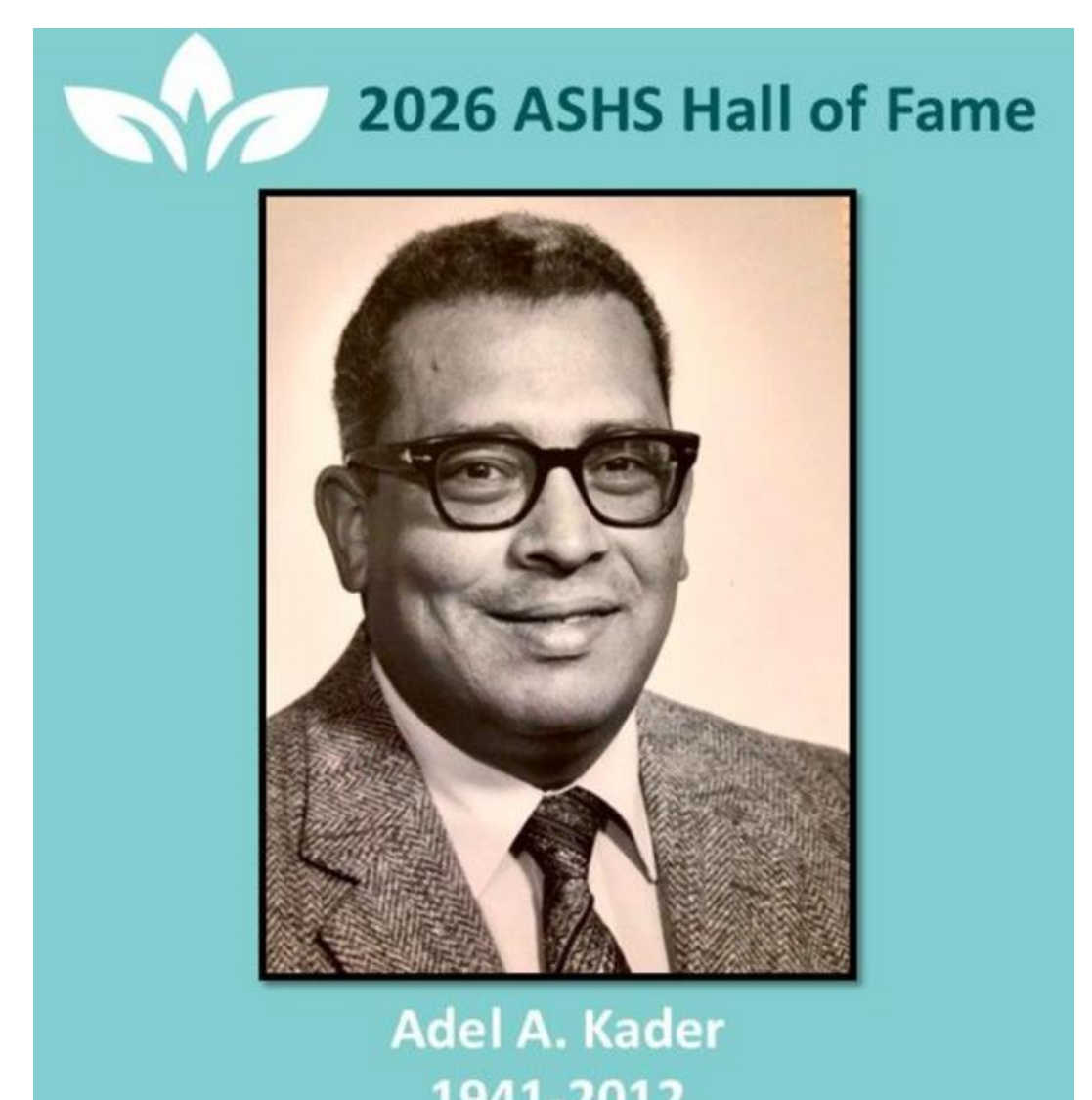
The Board of Directors formally dissolved the charity organization in December 2025. However, the website [www.postharvest.org](http://www.postharvest.org) will remain operational to provide free resources and mentoring. I will also remain active on LinkedIn and continue to administer the Postharvest Training and International Consulting discussion group.

---

## **2026 ASHS Hall of Fame**

**Dr. Adel A. Kader**, a globally recognized leader in postharvest biology and technology, has been inducted into the ASHS Hall of Fame. Widely regarded as one of the most influential scientists in the field, he is being honored for his outstanding contributions to postharvest research and innovation. He was one of the founding members of PEF and a mentor to Dr. Lisa and many other postharvest scientists.

**[See post](#)**



---

## The Company of Heaven event video



The Company of Heaven hosts free, family-oriented events worldwide that offer enjoyment, learning, new experiences and a sense of community. Their mission is to help others every day and spread love. PEF provided financial and technical support during 2024-26 for the Rescue F&V Project, The BIG Giveaway and Community Care Day. [Watch now](#)

---

## World Refrigeration Day

On 26th June, 2026, World Refrigeration Day was commemorated. The WRD Secretariat had announced this year's global theme: **Cool Intelligence**.

[Know more](#)



---

## RESET 2026: Dialogues to Reduce Food Loss and Waste in India



**Date: 9-10 July 2026**

**RESET (WRI INDIA)**

[Link to register](#)

RESET 2026 will highlight how reducing food loss and waste can strengthen livelihoods, improve nutrition and build more resilient, inclusive food systems. In addition to dialogue sessions, the event will feature an exhibition showcasing innovative solutions and technologies, including farm-gate interventions, postharvest management, urban food waste prevention and waste-to-value approaches.

[Register now](#)

---

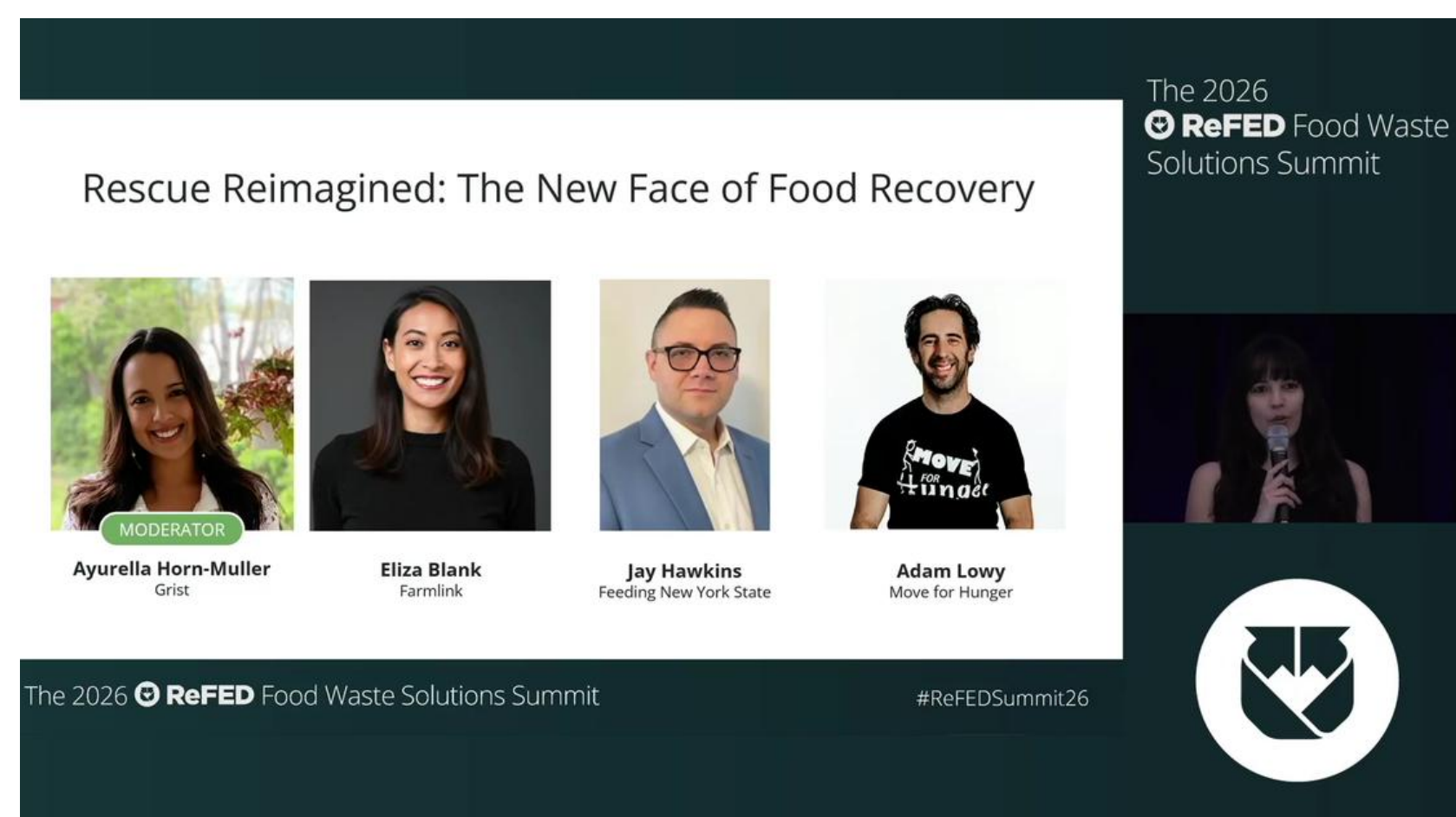
## Global Report on Food Crises 2026

The Global Report on Food Crises 2026 highlights that acute food insecurity and malnutrition remain critically high, with crises increasingly concentrated in a core group of countries. The report shows that acute hunger has doubled over the past decade and records the first two famine declarations in its history. Produced by 18 partners under the Global Network Against Food Crises (GNAFC), the report provides a consensus-based assessment of food insecurity and malnutrition to inform humanitarian and development responses at global, regional and national levels.

[Read more](#)



## The 2026 ReFED Food Waste Solutions Summit



The session highlighted how solution providers are strengthening food rescue through improved logistics, stronger donor partnerships and cross-sector collaboration to enhance efficiency, reliability and overall impact.

[Watch now](#)

## Call for Applications: GROW Fellowship – Gender Responsive Research for Optimized Women-led Breeding Systems

Applications are now open for the **GROW Fellowship**, designed for women plant breeders in Africa. This immersive, non-residential Fellowship supports leadership, visibility, and career advancement by strengthening participants' capacity to lead gender-responsive plant breeding research, influence scientific and policy agendas, and drive crop improvement efforts.

[Apply now](#)

Last Date: 24 July 2026

GROW Fellowship

[Link to register](#)



## “Developing solutions that work for African realities”: ALU students visit ACES Campus

On 18 June 2026, 20 students and lecturers from African Leadership University (ALU) visited the Africa Centre of Excellence for Sustainable Cooling and Cold-chain (ACES) in Kigali, Rwanda, to explore sustainable cooling technologies. Through campus tours and expert-led sessions, participants learned how cooling supports agriculture, trade, food security and entrepreneurship, by reducing food loss and improving market access.

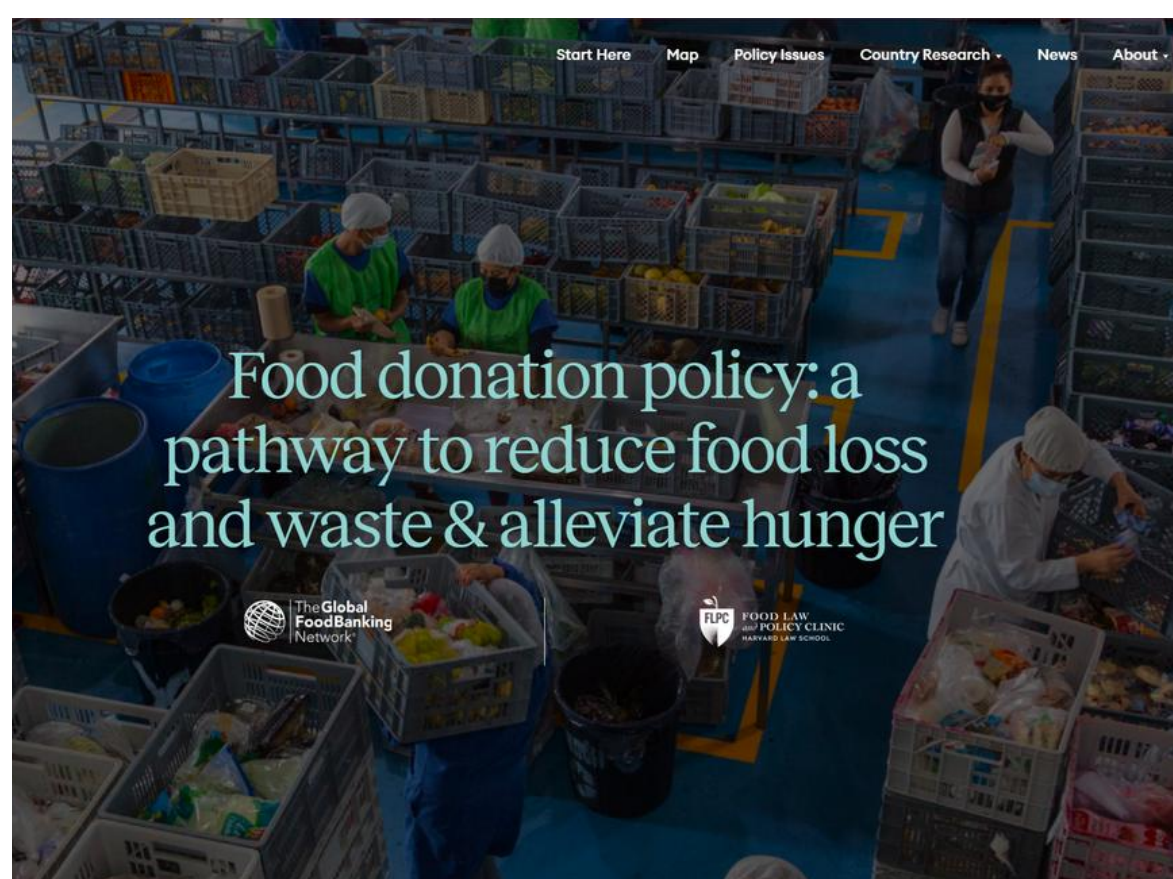
The visit connected classroom learning with practical application while showcasing digital monitoring, green entrepreneurship and climate-smart innovation. It also highlighted the strong participation of women and demonstrated how Africa is developing sustainable cooling solutions tailored to local needs.

[Read more](#)



Students from ALU visited the ACES campus  
© Clean Cooling Network / Mireille Isimbi

## Food donation policy: a pathway to reduce food loss and waste & alleviate hunger



The **Global Food Donation Policy Atlas** is the first initiative to map laws affecting food donation worldwide, helping address food loss and food insecurity. Developed by the Harvard Law School Food Law and Policy Clinic (FLPC) and The Global FoodBanking Network (GFN), it enables practitioners to understand and compare national food donation laws, identify legal barriers, and share best practices and recommendations.

[Read more](#)

## Reducing post-harvest food losses as a pathway towards net-zero agriculture

Using the Food, Agriculture, Biodiversity, Land-Use and Energy (FABLE) Calculator, this study assessed the socioeconomic and environmental impacts of reducing postharvest losses (PHL) under five scenarios. Results show that reducing PHL alone lowers production requirements and costs by improving supply chain efficiency. However, the National Commitments pathway combining a 25% PHL reduction with complementary policies delivered the greatest cost savings and emissions reductions.

[Read more](#)



## How Cold Chain Partnerships Expand Food Recovery

**Cold chain is one of the most effective ways to cut food waste and improve food access.**

How Cold Chain Partnerships Expand Food Recovery



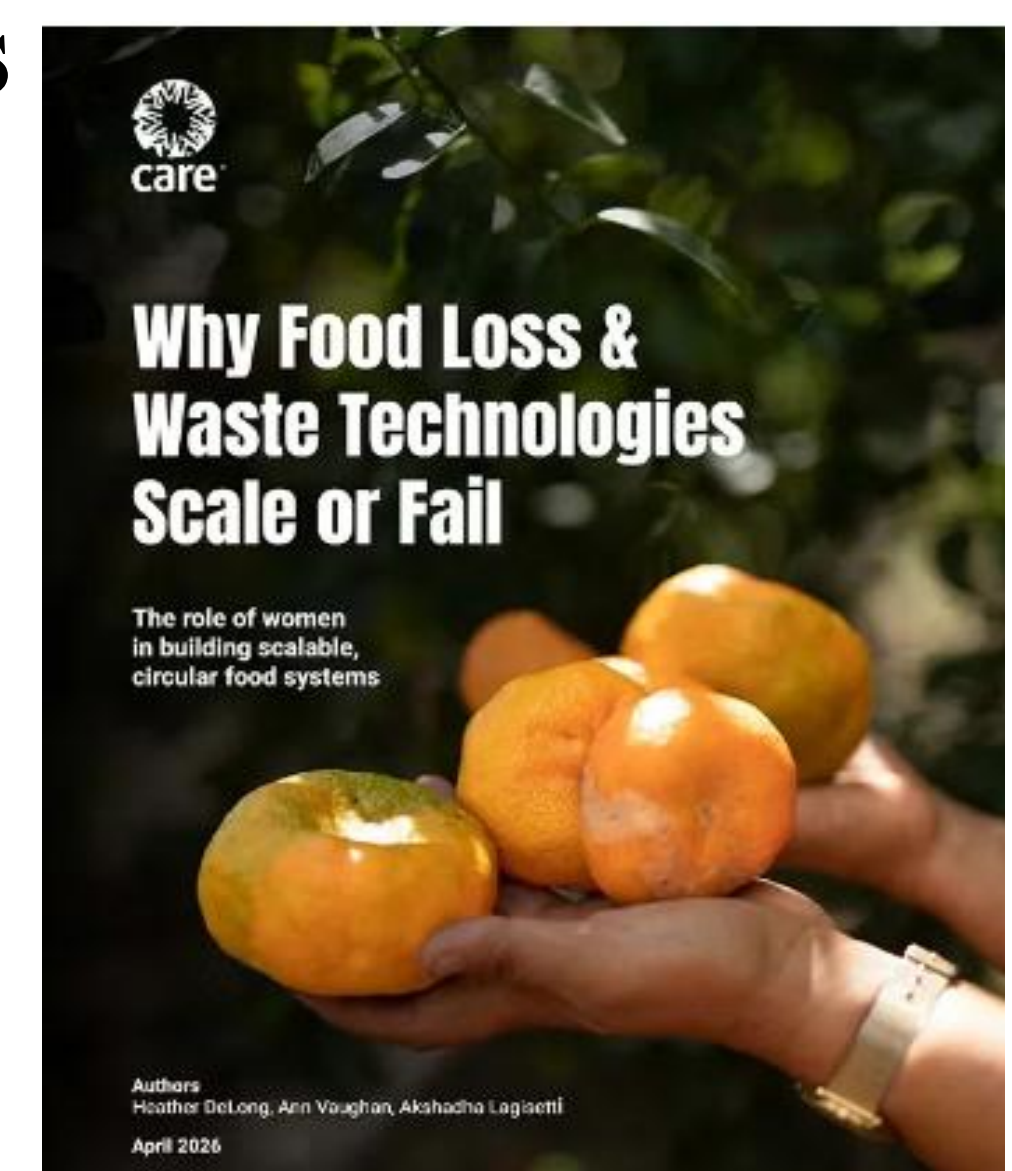
Food loss and waste are increasingly recognized as major challenges affecting climate, resource use and food security. Reducing these losses is one of the most effective ways to strengthen food systems and ensure more food reaches the communities that need it most. For highly perishable products such as fresh produce, dairy and proteins, effective cold chain systems are essential to preventing food loss. (Via GFBN)

[Read more](#)

## Why Food Loss and Waste Technologies Scale or Fail: The Role of Women in Building Scalable, Circular Food Systems

Drawing on evidence from more than 21 countries, this paper from CARE explores why many FLW solutions fail to scale and identifies what is needed for lasting, system-level change. It reflects CARE's commitment to achieving Sustainable Development Goal 12.3 through women-centered, market-driven strategies that create sustainable impact.

[Read more](#)



---

## GAFSP 9th Call for Proposals for Country-led Projects



The Global Agriculture and Food Security Program (GAFSP) ninth call for proposals invites applications from national governments, with a strong focus on fragile and conflict-affected states, which currently receive about 60% of its grant funding. The call also prioritises innovative, integrated solutions that address climate impacts, nutrition and women's empowerment through coordinated approaches.

[Apply now](#)

---

### The SafeVeg surge: West Africa celebrates biggest-ever boost in climate-smart vegetable varieties

The SafeVeg project has enabled West African farmers to access the largest expansion of officially recognised vegetable varieties in the region's history. Over five years, the WorldVeg-led initiative supported the release of 68 climate-smart vegetable varieties in Benin, Mali and Burkina Faso, including tomato, okra, onion, chilli, habanero pepper, amaranth, roselle and jute mallow. The registrations nearly doubled the number of officially recognised vegetable varieties across the three countries, increasing the total from 70 to 138.

[Read more](#)



---

### WRI: Rwanda's Food Waste Could Feed Millions. Small Businesses Are Showing How.



Rwanda loses nearly 40% of its food each year due to poor storage, limited processing, spoiled harvests and household waste, costing an estimated 12% of GDP. In Kigali, household food waste averages 164 kilograms per person annually. With 19% of households experiencing food insecurity, these losses have serious social, economic and environmental impacts. They waste valuable land, water and energy while reducing farmers' incomes. Similar challenges exist across Sub-Saharan Africa, making the reduction of postharvest losses and food waste essential. Circular food systems are emerging as a promising solution, according to the World Resources Institute. [Read more](#)

---

# Climate-Driven Food Loss: The Case of Postharvest Tomato Losses in Southern Tanzania

A study of 52 small-scale tomato farmers in Tanzania's Kilolo district found that climate variability is driving significant postharvest losses, threatening livelihoods (Rutta 2026). Unpredictable rainfall, poor storage, transport delays and weather-related collection delays were the main causes, with losses reaching up to 40% due to inadequate storage facilities. While pest outbreaks caused some preharvest losses, postharvest losses were far greater. The study recommends greater investment in postharvest management training, extension services and affordable infrastructure, including cold storage and tomato processing facilities, to reduce losses and strengthen farmers' resilience to climate-related challenges.



## Harnessing postharvest innovation for indigenous crops to advance nutrition and climate resilience in sub-Saharan Africa: a review



Postharvest losses threaten food and nutrition security in sub-Saharan Africa, particularly for indigenous crops that support climate resilience, dietary diversity and local livelihoods. This review examines how crop physiology, preservation technologies and systemic barriers influence postharvest outcomes across four indigenous crop systems. (Olawejaju et al 2026)

[Read more](#)

## ReFED Summit 2026

**Mr. Gurbinder Gill** attended the ReFED Food Waste Solutions Summit in Charlotte, which marked ten years of the ReFED Roadmap, highlighting the importance of data, collaboration and scaling proven solutions to achieve 2030 food waste reduction goals. The event brought together innovators, businesses, policymakers and nonprofits to discuss accelerating measurable impact across the food value chain. Participants also explored new ideas and partnerships to advance food waste solutions across both the private and public sectors.





## Our mission

The Postharvest Education Foundation (PEF) has a mission to provide innovative programs that motivate and empower people to reduce global food losses and maintain quality, market value, nutritional value and food safety.

### Our Strategy:

- Conducting a variety of postharvest e-learning programs for young professionals who work with small-scale farmers in developing countries.
- Providing free access to postharvest training materials for those who are involved in extension work and training of farmers, produce handlers, small-scale food processors and marketers.
- Supplying postharvest tools and basic equipment for use in applied research and for improving practical field operations.
- Organizing postharvest workshops for e-learners who complete their online programs.
- Long-term mentoring for participants in e-learning programs via social networking websites
- Conducting short courses, study tours and workshops
- Providing advice and guidance for establishing local postharvest training centres

PEF's 'Global Postharvest E-learning Program' is FREE to all  
AVAILABLE IN *ESPANOL* AND *FRANCAIS*

Check the website for further details :

<https://postharvest.org/programs-e-learning-capacity-building/>



*Thank you for reading!*

**THE POSTHARVEST  
EDUCATION FOUNDATION**

Email:  
vijayyadav.t@postharvest.org

Website: [www.postharvest.org](http://www.postharvest.org)

Connect with us on:

